

Quality care is only fair...



COMPANY PROFILE

MATTEST ENGINEERING SERVICES LLP



TC-6202



IB 142

Address:

A-39,40,41, Udhana City Industrial Estate, Udhana
Navasari Main Road, Udhana, Surat - 394 210

Website:

www.mattestlab.com

ABOUT OUR COMPANY

Established in 2012, MATTEST ENGINEERING SERVICES LLP is a leading consultancy firm specializing in road and bridge infrastructure. Based in Surat, Gujarat, we offer end-to-end services including design, project management, third-party inspection, and material quality assurance through our advanced central laboratory and on-site testing facilities.

We specialize in comprehensive construction material testing and consultancy services across all project stages. Our lab is equipped to test a wide range of materials including soil, cement, aggregates, bitumen, concrete, steel, bricks, tiles, road safety elements, and many more.

We offer the following specialized services for construction projects

- Construction Material Testing & Quality Control
- Third-Party Inspection & Certification
- Road Safety Audit
- Topographical & Road Surveys
- Geotechnical Investigations
- Engineering Design of Pavements, Superstructures, and Bridges
- Detailed Project Report (DPR) Preparation
- Cost Estimation & Quantity Analysis
- Project Management Consultancy (PMC)

“Quality care empowered by
Innovation and Technology”



QUALITY POLICY

MATTEST Engineering Services LLP is committed to delivering competent, impartial and consistently reliable testing and inspection services that inspire confidence among our clients and stakeholders. To fulfil this commitment, we shall:

- Safeguard competence, impartiality, integrity and confidentiality in every activity we perform.
- Produce accurate, traceable and timely results by strictly following relevant national and international standards and by applying state-of-the-art methods and equipment.
- Operate a risk-based quality-management system aligned with ISO/IEC 17025:2017 (and related standards), setting measurable objectives, monitoring performance and driving continual improvement.
- Identify risks and opportunities in each laboratory process and act promptly to mitigate risks and enhance service quality and efficiency.
- Equip and empower all personnel through ongoing training, clear procedures and an ethical code that demands impartiality and confidentiality at all times.
- Focus on customer value by offering responsive technical support, transparent communication and unbiased, professionally presented reports.
- Review and improve this policy periodically to ensure ongoing relevance and to uphold the confidence of customers, regulators and other interested parties.
- Maintain fit-for-purpose resources and infrastructure – continually invest in calibrated equipment, validated software, and safe laboratory environments to ensure every test is performed under controlled and reproducible conditions.
- Leverage digital data-integrity controls – implement secure LIMS platforms with audit trails and electronic signatures so that all raw data, calculations, and reports remain tamper-evident, retrievable, and transparent throughout the record-retention period.

Quality care is only fair...



VISION

To evolve as a centre of excellence driven by innovation, integrity, and continuous improvement, empowering skilled professionals to serve the nation and the Indian industry.

We aspire to become a global leader and modernizer in material testing and engineering services by delivering technically superior solutions through the application of cutting-edge technologies and professional excellence



MISSION

- 01 To provide exceptional and reliable material testing and engineering services that exceed customer expectations through precision, transparency, and continuous innovation.
- 02 We are committed to building long-term, value-driven partnerships by applying advanced technologies, promoting sustainable practices, and nurturing a culture of professional excellence and integrity among our team.
- 03 Our mission is to empower industry and infrastructure growth while ensuring the well-being of future generations through eco-conscious and quality-focused solutions.



CORE VALUES

- ✓ Commitments to Customer Satisfaction
- ✓ Continuous improvement through innovation
- ✓ Integrity and impartiality in all activity
- ✓ Teamwork, safety, and respect for individuals
- ✓ Adoption of sustainable and eco-friendly practices
- ✓ Compliance with ethical, legal, and accreditation norms
- ✓ Transparency in communication and reporting

ACCREDITATIONS & LICENCES



NABL

National Accreditation Board for
Testing Laboratories



TC-6202



NABCB

National Accreditation Board
for Certification Bodies



Road & Buildings Department
Government of Gujarat



सत्यमेव जयते



AAI

Airport Authority of India

ACCREDITATIONS & LICENCES



MoRTH

Ministry of Road Transport and
Highways



GIDC

Gujarat Industrial Development
Corporation



GETCO

Gujarat Energy Transmission
Corporation Limited



SMC

Surat Municipal Corporation



AMC

Ahmedabad Municipal
Corporation



WHY CHOOSE US?

At MATTEST Engineering Services LLP, we stand out as a trusted partner for consultancy, inspection, material Testing and designing services. Our unwavering commitment to quality, precision, and progress ensures that clients consistently choose us for reliable, end-to-end solutions across every stage of construction and development.



Powered by New-Age Technology

We integrate advanced digital tools, automated systems, and smart instruments to deliver high-precision test results with enhanced speed, consistency, and reliability.



Accuracy You Can Trust

Our test methods are aligned with national and international standards, validated by calibrated equipment, and executed under controlled environments to ensure traceable and error-free results.



Experience-Driven Excellence

With over a decade of experience across diverse projects—from highways to high-rise buildings—we provide solutions that are both technically sound and practically relevant.



Reliable, Transparent, and Timely

From sample receipt to report delivery, our processes are monitored via digital platforms (like LIMS), ensuring real-time tracking, transparent reporting, and on-time delivery.



Client-Centric Approach

We prioritize long-term partnerships by offering personalized service, proactive support, and clear communication throughout the testing lifecycle.

OUR SERVICES

01



Construction Material Testing Services

- Steel Testing
- Cement Testing
- Aggregate Testing
- Brick Testing
- Tiles Testing
- NDT Testing
- Bitumen mix Testing
- Emulsion Testing
- Concrete Testing
- Thermoplast Testing
- Soil Testing
- Other Building Materials

02



Project Management Consultancy

- Project Planning & Scheduling
- Quality Assurance & Control
- Risk Assessment & Management
- Site Supervision & Monitoring
- Regulatory Compliance & Documentation

03



Third Party Inspection

- Structural Integrity & Safety Checks
- Performing On-site quality checks
- Specified activity-wise Inspection

04



Highway Designing

- Pavement design and Analysis
- Geometric Design and Alignment Studies
- Junction Design
- Traffic Flow Analysis and Control Measures
- Traffic Survey & Axle load Survey
- Implementation of Road Safety Audit

05



Estimate, DPR and Tender Preparation

- Estimate Preparation for Road Project
- Detailed Project Report Preparation
- Feasibility Study and Conceptual Planning
- Tender Documentation

OUR SERVICES

06



Geotechnical Investigation Services

- Advanced Hydraulic Soil Investigation Equipment
- Automated Standard Penetration Test
- Rock Drilling with High Accuracy
- Under Water Soil Investigation

07



Road Inspection Services

- Quality Control & Testing
- Design Feasibility Inspection
- Layer-Wise Inspection During Construction
- Finalization of Work Inspection

08



Bridge Inspection Services

- Specified Activity-Wise Inspection
- Expansion Joint and Bearing Inspection
- Load Testing and Analysis

09



Building Inspection Services

- Item-Wise Inspection During Construction
- Concrete Quality Testing
- Steel Reinforcement Verification
- Load Testing on Flexural Members of the Building

10



Advanced Testing Capabilities

- FWD Test for Pavement Analysis and Design
- Bump Integrity Test for Surface Quality
- Road Marking and Sign Board Tests
- Skid Resistance Test for Highways and Airports

CORE COMPETENCIES



Construction Material Testing Services

- ✓ Comprehensive testing for soil, steel, cement, concrete, aggregates, brick, tiles, bitumen, CGBM, bitumen mix, concrete, emulsion and thermoplast mix to meet national and international standards.
- ✓ State-of-the-art laboratory facilities equipped with modern testing equipment for mechanical, physical, and chemical analysis.
- ✓ Ensuring material quality, strength, and compliance for infrastructure projects of all scales.

“Empowering Quality with Precision
and Technology”



CORE COMPETENCIES



Project Management Consultancy

- ✓ Successfully delivered 100+ consultancy projects across road construction, bridge development, and urban infrastructure, ensuring quality and efficiency in every phase.
- ✓ Our extensive experience enables us to handle projects of all complexities with a high degree of professionalism and precision.
- ✓ We employ a meticulous checklist system for each project phase, covering planning, execution, monitoring, and quality assurance.

“Excellence in Every Milestone”



CORE COMPETENCIES



Third Party Inspection

- ✓ End-to-end inspection services covering structural steel, concrete works, road pavements, bridges, earthwork, masonry, electrical installations, and plumbing. Our inspections ensure strict adherence to national and international standards, backed by **NABCB certification** for roads, buildings, and bridges.
- ✓ Our expert team ensures on-site verification, material quality checks, workmanship assessment, and safety audits for projects of all scales, including roads, buildings, and bridges.
- ✓ Equipped with advanced tools and methodologies for dimensional checks, load testing, non-destructive testing (NDT), and material verification.

“Inspecting Quality, Ensuring Safety”



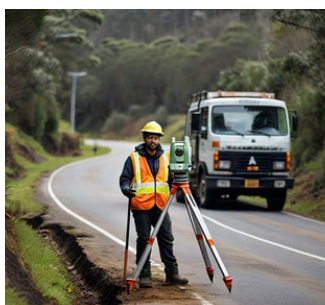
CORE COMPETENCIES



Highway Engineering

- ✓ Expert in design of flexible and rigid pavements following IRC 37:2018 and IRC 58:2015 guidelines, ensuring optimal load distribution, durability, and cost efficiency.
- ✓ Precision alignment and geometric design for highways, urban roads, and expressways, focusing on safety, smooth traffic flow, and optimal land usage.
- ✓ Advanced traffic analysis and control strategies to improve vehicular movement, reduce bottlenecks, and enhance road safety, incorporating intelligent transport systems (ITS).

“Precision Design, Smooth Journeys”



CORE COMPETENCIES

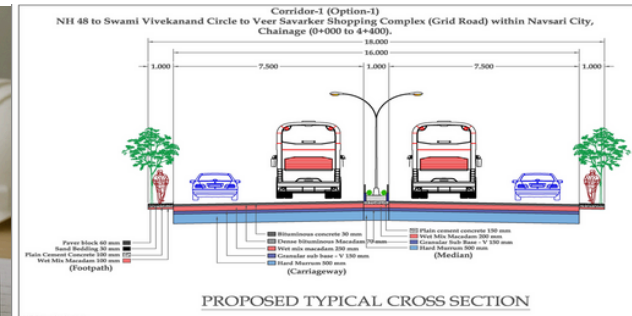


Estimate, DPR and Tender Preparation

- ✓ Preparation of accurate cost estimates and BOQs based on field data, design inputs, and technical specifications to ensure financial planning and transparency in infrastructure projects.
- ✓ Development of Detailed Project Reports (DPRs) including feasibility studies, design drawings, material specifications, environmental considerations, and lifecycle costing, aligned with IRC and MoRTH standards.
- ✓ Comprehensive tender documentation and bid process support, ensuring clarity, competitiveness, and compliance with government procurement norms, while enabling efficient contractor selection.

“Crafting Roadmaps for Reliable Execution”

Item No.	Description	Quantity	Unit Rate	Amount
1	Earthwork	2	1,000	6,200
2	Concrete for Earthwork	1	7,000	3,500
3	Concrete for Structural Component	2	3,000	5,000
4	Concrete for side baffle Braddings	8	3,000	7,400
5	Reinforcement	1	6,000	12,000
6	Brickwork	2	6,500	10,000
7	Floor Tile Finishing	1	5,000	15,500
Total			7,500	10,500
				872,500



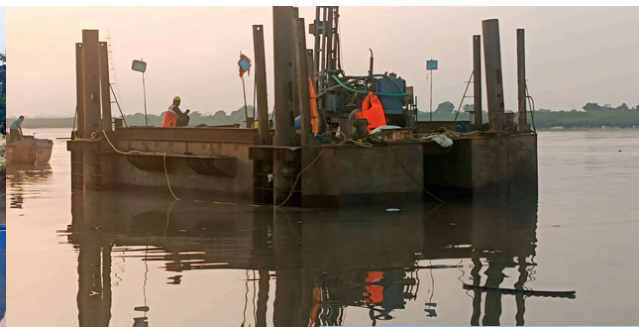
CORE COMPETENCIES



Geotechnical Investigation Services

- ✓ We conduct comprehensive geotechnical investigations to evaluate soil strength, sub-surface conditions, and site suitability for infrastructure projects.
- ✓ Our services include borehole drilling, soil sampling, laboratory testing, and in-situ testing like SPT, Undisturbed Sampling and rock Drilling.
- ✓ We are also equipped to perform soil investigations over rivers and water bodies using pontoons, ensuring accurate data collection in challenging environments.

“Ground Truth for Confident Design”



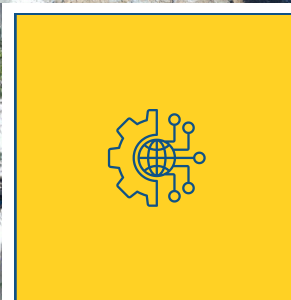
CORE COMPETENCIES



Advanced Testing Capabilities

- ✓ We deliver field-based testing solutions to evaluate pavement performance, surface quality, and safety compliance.
- ✓ Our specialized services include Falling Weight Deflectometer (FWD) analysis for pavement design, NSV for 3D profiling of highways, bump integrity testing for surface smoothness, k-value test, pile load test skid resistance evaluation for traction control and road marking retro-reflectivity assessments.
- ✓ These advanced testing capabilities support data-driven decisions, enhance long-term durability, and ensure infrastructure meets national and international standards for highways, runways, and expressway networks.

“Advanced Testing for Smarter
Infrastructure”



WHAT WE'VE ACHIEVED



Construction Material Testing Services

- Delivering 3,000+ construction material tests every month with precision and consistency
- We execute on-site testing across 250+ high-value projects each month through our specialized field teams

Geotechnical Investigation Services

- We have explored over 8,000 locations for geotechnical investigations across Gujarat since our establishment.
- Today, we perform more than 100 geotechnical investigations every month.



Bridge Designing

- We have successfully completed the design of over 25 bridges, including minor and major structures across highways and urban networks.
- Our expertise ensures structurally sound, code-compliant, and cost-effective designs tailored to site-specific conditions

Highway Designing

- Over 500 km of highways designed every year for the Government of Gujarat, supporting state-wide infrastructure growth.



Estimate, DPR and Tender Preparation

- Each year, our team prepares detailed estimates for highway development projects worth more than 30,000 crores

*The achievements listed above reflect project outcomes and milestones completed up to May 2025.

WHAT WE'VE ACHIEVED

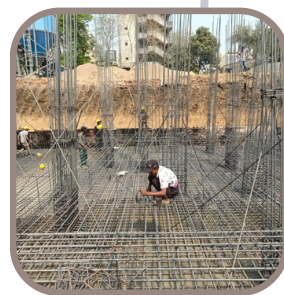


Surveying

- Each year, we complete surveying assignments covering over 500 kilometers, supporting design, DPR, and land acquisition planning.
- We provide precise topographical and route alignment surveys for infrastructure development across highways, bridges, and urban corridors.

PMC & Third Party Inspection

- We have Successfully delivered 200+ third-party inspections projects and PMC projects with a focus on transparency and technical accuracy for road, building and bridge.



Inspection Services

- We have successfully completed over 1,000 site inspections for Gujarat Government projects.
- We are now NABCB-accredited to carry out inspection activities in compliance with ISO/IEC 17020 standards.

Road Safety Audit

- We have completed road safety audits covering over 5,000 kilometers of highways, urban roads, and critical corridors.



Training Sessions

- We've conducted 20+ training programs to promote technical awareness and best practices.
- Several sessions were held exclusively for government staff on road safety and quality control

*The achievements listed above reflect project outcomes and milestones completed up to May 2025.

THANK YOU

Access our latest NABL & NABCB
Certificates scopes



Scan For NABL Scope



Scan For NABCB Scope



We are ready to assist you

- For detailed service inquiries, collaboration, or technical presentations, feel free to contact our team.
- We're committed to excellence in every layer—from lab to field.



A-39,40,41, Udhana City Industrial Estate, Udhana Navasari Main Road, Udhana, Surat - 394 210 📍



+91 90818 00020
0261 2272261



www.mattestlab.com



**BRINGING IDEAS & INNOVATION TO
LIFE THROUGH TECHNOLOGY**